

Photizo® Vet care – Uses and Applications

Photizo® Vet care is designed to treat:

- Domestic animals – dogs and cats / other small pets
- Large livestock
- Horses

Photizo® Vet care has proven to be effective in the treatment of:

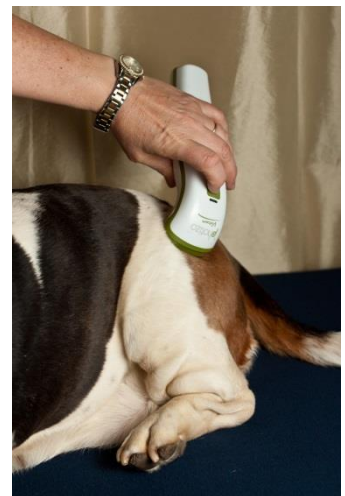
Skin Conditions:

Wounds, lacerations, hyalomma tick bite necrosis, hotspots, abscesses, saddle sores, habronema, proud flesh, acral lick granulomas, bruising, otitis externa, pyoderma, pododermatitis, skin allergies, eczema, etc.



Musculoskeletal problems:

Arthritis, tendonitis, myositis, ligament/tendon sprain/strains, bruising, fractures, neck and back pain, splints, overuse injuries, synovitis, oedema, haematomas, muscle injuries, muscle spasms, trigger points, seromas, mastitis, etc.



Post-op:

Any area treated surgically, including skin grafts.

Other:

Corneal ulcers, viral herpes-related conditions, sinusitis, retro-orbicular trauma.

How to administer treatment

- Each dose is 31 seconds
- Place the probe in direct contact with the skin on the area to be treated. Press the power button, the unit will beep twice.
- Keep the probe in that position until the unit beeps again, it switches off automatically and this indicates one dose. If double or triple dosages are needed keep the probe in position and repeat the dose as directed for treatment of different conditions.
- If a large area is to be treated, move the probe to the next/adjacent area and press the power button again. Repeat until the entire affected area has been covered with the appropriate dose.